

33 845 875



- 552mm projection
- pivotable spout 360°
- air-enriched flow
- height of mixer 372 mm
- height up to aerator 290 mm
- rosette 55 mm
- hole diameter 30 mm
- 2 x pressure hose with 3/8" cap nut
- max. flow 5.7 l/min at 3 bar flow pressure
- lead-free
- This product can help a building meet the requirements of Green Building Rating Systems, e.g. LEED®, BREEAM®, DGNB

Not possible in combination with rinsing spray.

| | | |
|--|--------------------------------|--------------------|
|  | Chrome | 33 845 875-00 0010 |
|  | Brushed Platinum | 33 845 875-06 0010 |
|  | Platinum | 33 845 875-08 0010 |
|  | Durabronze (23kt Gold) | 33 845 875-09 0010 |
|  | Dark Chrome | 33 845 875-19 0010 |
|  | Brushed Durabronze (23kt Gold) | 33 845 875-28 0010 |
|  | Brushed Champagne (22kt Gold) | 33 845 875-46 0010 |
|  | Champagne (22kt Gold) | 33 845 875-47 0010 |
|  | Brushed Chrome | 33 845 875-93 0010 |
|  | Brushed Dark Platinum | 33 845 875-99 0010 |

Recommended miscellaneous

AIR SWITCH Control button - Chrome 10 713 970-00

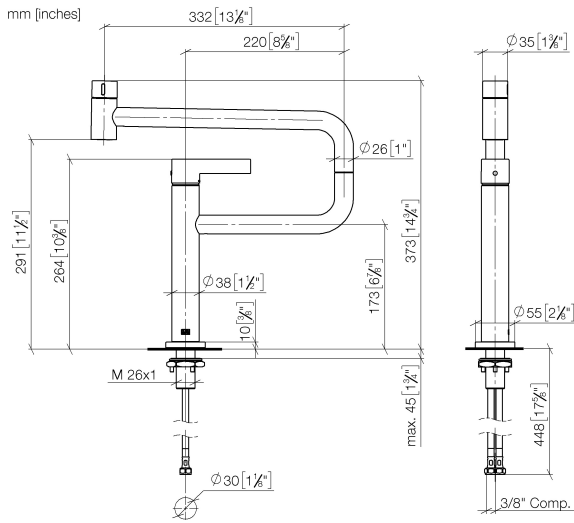


Recommended miscellaneous

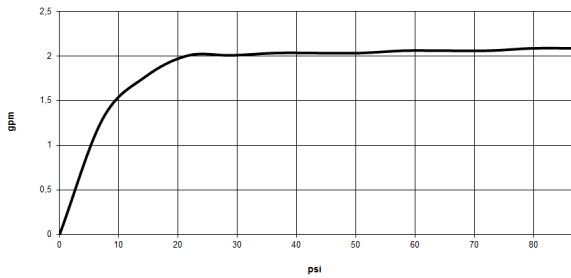
Dispenser with rosette - Chrome 82 444 970-00



33 845 875



Flow rate chart



Codes & Standards

ADA

ASME
A112.18.1/CSA
B125.1

California Energy
Commission
(CEC)

NSF/ANSI 372

NSF/ANSI/CAN
61



TARA ULTRA PIVOT Single-lever mixer - Chrome

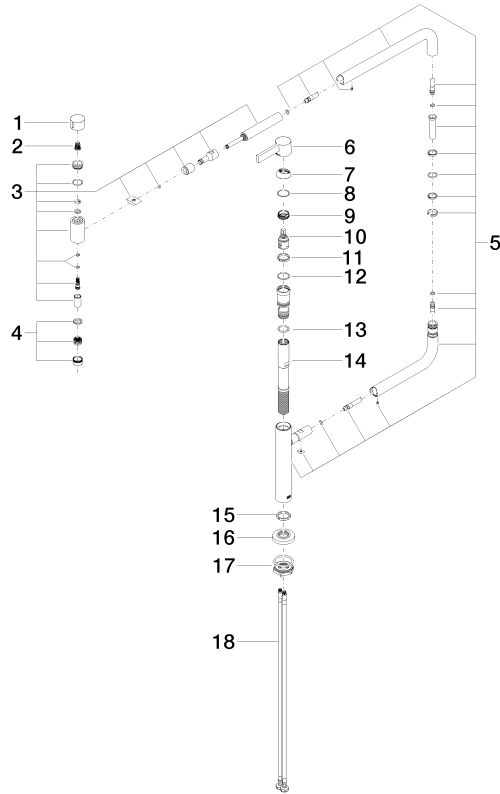
TARA ULTRA

33 845 875

Certificates

IAPMO_N-4976 (2). IAPMO_6397 (1).

33 845 875



Spare parts list

| No. | Item Number | Name | Quantity used | Delivery time |
|-----|--------------------|------------|---------------|---------------|
| 1 | 09 20 62 025-00 | handle | 1 | 10 |
| 2 | 90 12 12 002 00 90 | fixing cap | 1 | 2 |
| 3 | 90 19 87 001 00-00 | spout | 1 | 10 |
| 4 | 90 23 01 026 08-00 | aerator | 1 | 10 |
| 5 | 90 28 22 257 00-00 | joint | 1 | 10 |
| 6 | 90 20 87 004 00-00 | handle | 1 | 10 |
| 7 | 09 28 30 013-00 | cover | 1 | 10 |
| 8 | 09 14 10 091 90 | seal | 1 | 2 |
| 9 | 09 24 04 266 90 | nut | 1 | 2 |
| 10 | 90 15 05 042 00 90 | cartridge | 1 | 2 |
| 11 | 09 28 10 156 90 | ring | 1 | 2 |
| 12 | 90 14 10 063 00 90 | seal | 1 | 2 |
| 13 | 09 14 10 081 90 | seal | 1 | 2 |
| 14 | 09 30 01 126 90 | connection | 1 | 2 |
| 15 | 09 28 10 159 90 | ring | 1 | 2 |
| 16 | 09 27 87 033-00 | rosette | 1 | 10 |
| 17 | 04 30 11 085 87 90 | fixing set | 1 | 2 |
| 18 | 04 30 04 103 00 90 | hose | 2 | 2 |